

Richmond Joint Engineers' Council

NEWSLETTER October 2004

P.O. Box 8988, Richmond, Va 23225 Voice Mail: 804-278-2000 www.rjec.org

INSIDE:

- MEMBERSHIPS COMING IN...1
- SOCIETY ACTIVITIES.....1
- FIRST LEGO LEAGUE.....1
- HUNTING FOR SPONSORS2
- RJEC AT L.C.BYRD H.S.....2
- RJEC IS A CASE STUDY.....2
- CAREER DAY.....2
- CHANGE OF VENUE.....2
- NEXT RJEC MEETING.....2
- OCTOBER MINUTES.....3

MEMBERSHIPS COMING IN

We've started receiving dues for the 2004-2005 year. Those societies that have paid so far are ASHE, ASME, ASQ, IEEE, IES, IIE, PMI and SFPE. As we receive dues we annotate those that have paid by highlighting them on our "Societies" web page. You can use that list to check on your society. There are a number of valuable projects that we are trying to complete this year. Your dues are essential to those projects. And as we have said before, we are committed to making our member societies feel that they serve their constituencies better by joining RJEC.

MEMBER SOCIETY ACTIVITIES FOR EVERYONE

There are an increasing number of general interest activities on our "Society Activities" web page. These are events that to which non-members are cordially welcome. We strongly urge you to periodically look at this list for events that might be of interest to other members of your respective societies. Society Delegates and Presidents/Chairs, please make your members aware of these opportunities.

One upcoming event of interest are ASHE's Nov. 5 presentation, "VDOT

Sells Land Too". Most of us are familiar with buying property from private individuals, but how many of us are aware of VDOT land sales?

Another interesting program should be PMI's Nov. 6 seminars on "Estimating Techniques and Best Practices" and "Negotiations -- an Integral Part of a PM's Daily Life".

Send us a list of your upcoming activities that are open to other RJEC member organizations. We'll post them on our website. Email your list to rw.kates57@comcast.net.

FIRST LEGO LEAGUE COMPETITION NEEDS JUDGES AND REFEREES



Speaking of events of general interest, FIRST LEGO League, the robotics competition for 4th through 8th graders, is in need of adult volunteers to help out at the local qualifying tournaments. Two local competitions are planned: November 13 at Appomattox Regional Governor's School in Petersburg, and November 20 at Maggie L. Walker Governor's School in Richmond.

We are looking in particular for judges and referees. Eight referees and 12-16 judges are needed for each tournament. Teams are evaluated on the technical merits of their robots, which are completely autonomous robots built from standard LEGO components. In addition to the technical judging, teams also present a research project to a group of judges. This research explores the background of this year's competition theme: NO LIMITS!

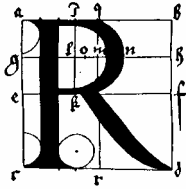


This year's FIRST LEGO League challenge focuses on the ways that people with disabilities may need assistance to accomplish the kinds of tasks that others take for granted. From picking up a compact disc to serving dinner without spilling anything, things that are second nature for some may require complex planning and assistance for many.

More than 40 Richmond area teams (along with 4260 others worldwide) have spent the past four weeks on the 2004 challenge. In a two-and-a-half minute round, the robots will attempt to lift and move a CD, retrieve and return a pair of glasses, serve dinner, push chairs under the table, play basketball, and feed the pets located on a closed porch. Did we remember to mention that the robots are fully autonomous and made of LEGOs?

If you are able to join us for the day, which begins at 8 and ends around 4, please contact Dee Tomczak, FIRST Senior Mentor, at dbtomczak@aol.com

The tournaments are open to the public at no charge, so if you cannot spare the whole day, but would like to see what it's all about, please come by for a peek at the action.



Richmond Joint Engineers' Council

NEWSLETTER October 2004

P.O. Box 8988, Richmond, Va 23225 Voice Mail: 804-278-2000 www.rjec.org

HUNTING FOR SPONSORS

Besides memberships, a considerable amount of our RJEC funding comes from company and individual sponsorships. Our sponsorship committee, headed by Herb Walke, is actively seeking sponsors for 2004-2005. If you know of a potential sponsor, please pass along your recommendation and a contact name to us – Herb Walke, John Stuart or Dick Kates. Our email addresses are on the “Contact Us” web page. Would you be willing to assist us in making contact? Is your employer a potential sponsor?

RJEC MEMBERS TELL L.C.BYRD STUDENTS ABOUT ENGINEERING

Recently, Robin Malone, Engineering Design teacher at Lloyd C. Bird H.S. in Chesterfield, contacted John Meola, our RJEC representative from the Speakers Bureau, and asked for engineers to speak to her class. Her first request was for a Mechanical or Aerospace Engineer. She is looking for an Electrical Engineer for February, a Systems or Manufacturing Engineer for March, and a Nuclear and Biomedical Engineer in the spring. If you'd like to volunteer, contact John Meola at JMeola@vmsom.com. I suspect that Robin would like to hear from both men and women engineers.

Jerry Davis of Davis Materials & Mechanical Engineering visited Robin's 10th grade class last week. He first talked about what kinds of work mechanical engineers do and what types of courses they might expect in college for a B.S.M.E. Then he gave a survey of his personal work. John also talked about the value of non-technical coursework (e.g.,

communication and writing) and the co-op program.

The students asked Gerry about other kinds of engineering, to which he responded as well as he could. They asked about recommended high school courses, the cost of an engineering education, and how long it takes. Surprisingly, they didn't ask how much money engineers make.



L.C. Bird High School

RJEC IS A CASE STUDY FOR ENGINEERS' WEEK 2005

Somebody knows that we're special. Check out the article at <http://www.eweek.org/site/Engineers/csrich.shtml>

START PLANNING NOW FOR CAREER DAY

Engineers' Week Career Day is February 27, but it's not too soon to begin planning a display for your organization. We recommend putting together a committee soon.

CHANGE OF VENUE FOR RJEC BOARD MEETINGS

We're moving the location of our monthly board meeting to the 1st Floor Conference Room of the Berger Building, located at 203 E. Cary Street in Richmond.

If you can't remember when or where our next meeting is, just go to the “RJEC Activities” page of our website, www.rjec.org.

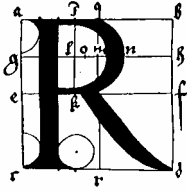
NEXT RJEC MEETING:

**November 11, 6:00-7:00 PM,
1st Floor Conference Room,
Berger Building, 203 E. Cary
St., Richmond, VA 23219**

**Use on-street parking or
parking lot in the back of the
building.**

Phone 261-8152 or 338-7326.

**Meetings are intended for all
member society delegates,
RJEC officers and RJEC
committee chairs. We also
encourage individuals from
both member and non-
member societies to attend.**



Richmond Joint Engineers' Council (RJEC)

P.O. Box 8988, Richmond, Virginia 23225

voice mail: 804-278-2000 www.rjec.org

RJEC Meeting Minutes – October 14, 2004 @ 6 p.m.

Location: Plant Zero, Café area (parking/entrance on 4th St. between Hull St. & Decatur St.)

CHANGE IN NEXT MEETING LOCATION: The Louis Berger Group, Inc. – 203 East Cary Street, Richmond, Virginia 23229. Phone: 804-261-8152 or 338-7326.

Attendees:

Luis Naranjo, PMI-CVC	VP.Programs@pmievc.org
John Meola, ASSE	jmeola@vmsom.com
Rudy Krack, AIChE	rkrack@bichemicals.com
Dick Kates, IIE	rw.kates57@comcast.net
Herb Walke, IIE	wherb@erols.com
Tom Haas, ASME	twhaas@vcu.edu
John Stuart, ASHE	jstuart@louisberger.com

RJEC 2004 – 2005 Chairman's Goals

1. Continue to improve and foster interaction and participation among RJEC Member Societies and continue development of membership database. ***Dues membership payments must be increased 100% from 2003-2004.***
2. Development of ***16 page*** Engineers' Week Supplement for displaying active Member Society information
3. Achieve Sponsor support goal of ***30% increase*** from 2003-2004.
4. Establish a new **Educational Committee** which develops and enhances the relationships between RJEC and the educational community.
5. Double the balance of the I. Russell ***Berkness Endowed Scholarship*** Fund towards meeting the RJEC commitment to Virginia State University.

Minutes:

- 1) Treasurer's Report reviewed.
- 2) Include announcement in October Newsletter for FIRST LEGO League Robotics competition for 4th through 8th graders, is in need of adult volunteers to help out at the local qualifying tournaments. Two local competitions are planned: November 13 at Appomattox Regional Governor's School in Petersburg, and November 20 at Maggie L. Walker Governor's School in Richmond.

They need judges and referees. 8 referees and 12-16 judges are needed for each tournament. Teams are evaluated on the technical merits of their robots, which are completely autonomous robots built from standard LEGO components. In addition to the

technical judging, teams also present a research project to a group of judges. This research explores the background of this year's competition theme:

- 3) **2004-2005 RJEC Dues:** Notices sent out and eight MS have paid. Great job by the Contact Initiative Team! Follow by Contact Initiative Team required on 11/1/04 – update on current paid members will be provided.
- 4) **2004-2005 RJEC Industry Sponsors:**
 - a) Announce opportunity for 2004-2005 Sponsors in newsletter and request suggestions from membership for potential sponsors.
 - b) Draft RJEC brochure reviewed. Send final comments or suggestions to Herb or John by 10/24/04. Will be printed and sent with Sponsor solicitation letter. Brochure will also be used for marketing visits and mailing.
 - c) First round of sponsor letters to be sent by end of month.
- 5) **Engineers Week Supplement:** No update. Prepare for November advertisement solicitations with RTD.
- 6) **Engineers Week Banquet (2/24/04):** John Stuart, Luis Naranjo, Rob Green
 - a) Solicit for speaker suggestions from membership in October newsletter. Need to lock in speaker by 11/15/04. Use as marketing tool for sponsors.
 - b) Potential sites and cost issues for Banquet discussed. Luis Naranjo (PMI-CVC Delegate) offered his assistance in reviewing potential facilities including the Holiday Inn Koger Center and Hilton.
 - c) Should tentative reserve that date at possible facilities.
- 7) **Essay Contest:** No update.
- 8) **Engineers Week Career Day (2/27/04):** Announce Career Day in October Newsletter for MS to start planning
- 9) **Education Committee:** In progress with discussion for potential Chair and committee members.
- 10) **Next Meeting:**
 - a) Announce change in location for next meeting.
 - b) November 11, 2004, 6 p.m. at:

Office of The Louis Berger Group, Inc./VMS 203 East Cary Street, Suite 100,
Richmond, Virginia. Phone 804-225-0348 or 804-261-8152.

Parking on Street or in behind building off of 3RD Street.

ACTION ITEMS:

- A. October Newsletter sent out and posted.
- B. Sponsor letters mailed.
- C. Banquet Speaker selected and confirmed
- D. Banquet Facilities selected and reserved.

RJEC - October Treasurer's Report - 10/14/04

Opening Balance **3,489.62**

Income

Date	Source	Amount
8/31/2004	Interest	0.27
9/30/2004	Interest	0.25
10/8/2004	Memberships	
	ASQ - 2003/04 & 2004/05	200.00
	ASHE	50.00
	IIE	50.00
10/14/2004	Memberships	
	ASME	100.00
	IES	50.00
	IEEE	100.00
	SFPE	50.00
	PMI	100.00
Total Income		700.52

Expenses

Date	Check No	Payee	Memo	Amount
8/31/2004		Sun Trust	Service Charge	12.00
9/13/2004		Globat, LLC	Web Site	90.00
9/30/2004		Sun Trust	Service Charge	12.00
10/14/2004		Barbara Nesbitt	Wine & Cheese Social	731.59
Total Expenses				845.59
Closing Balance				3,344.55
Less Scholarship Holdback				1,400.00
Available Balance				1,944.55