

Richmond Joint Engineers' Council (RJEC)

P.O. Box 8988, Richmond, Virginia 23225

www.rjec.org

RJEC Officers 2007-2008

Chair

Mark Oakes

VPMEP

323-2226 ext 223

moakes@vpnep.org

Chair-Elect

Jim Watson

WallacePledger, PLLC

282-8300

jwatson@wallacepledger.com

Vice-Chair

Steve Wagner

Henrico County School System

328-4073

sswagner@henrico.k12.va.us

Treasurer

Rudy Krack

Boehringer Ingelheim

504-8752

rkrack@bichemicals.com

Secretary

Jerry Barnett

746-0881

Jbarn2934@aol.com

Communications Director

Brad Reynolds

Data Resource Systems

794-9486

brad.reynolds@verizon.net

Historian

Ray Nesbit

359-4861

rnesebitt@cavtel.net

Executive Director

Dr. Tom Haas

VCU

827-0446

twhaas@vcu.edu

Past Chair

Herb Walke

Walke Business Solutions

794-4781

wherb@erols.com

Speaker's Bureau

Carrie Langelotti

Austin Brockenbrough & Associates

748-8746

clangelotti@brockenbrough.com

December/January NEWSLETTER

2008 Engineers' Banquet is Set

The 2008 Engineers' Banquet is set for February 21st at the Jefferson Hotel. The speaker for this year's banquet will be Mr. Eugene S. Grecheck, vice president-Nuclear Support Services, Dominion Generation. All of the details are included in the banquet flier and at the RJEC web-site.

Career Day will be February 24th at the Science Museum

We need to hear from each society that will be staffing a table at Career Day. Please promote the event including the Bridge Building and Egg Drop Events in the school systems. Information is on the RJEC Web-site.

Engineering Supplement

Information about each society for inclusion in the Engineering Supplement is needed ASAP. Please forward any information to Jerry.

Leadership Forum

We are in the planning stages for the annual leadership forum. We are asking for input on topics of interest. Please send an e-mail to Mark or Jerry.

Engineers: Turning Ideas Into Reality

Annual Dues

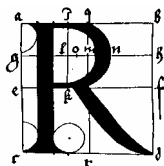
Member society dues to cover the 2007-2008 year are now due. The RJEC year is September to August. Dues are \$100 for societies with 100+ members and \$50 for societies with less than 100 members. If you have questions contact Rudy Krack or Mark Oakes. An Invoice will be available at the RJEC website.

Next Meeting

All RJEC meetings are open to all member societies. The next RJEC Meeting is February 14th, at 6:00 third floor of the Science Museum. We meet the second Thursday of every month.

WWW.RJEC.ORG

Website Address!!!!!!



Richmond Joint Engineers' Council (RJEC)

P.O. Box 8988, Richmond, Virginia 23225

www.rjec.org

2008 ENGINEERS' WEEK BANQUET

INFORMATION & REGISTRATION



DATE: THURSDAY, FEBRUARY 21, 2008

TIME: 5:00 - 6:00 PM (SOCIAL) – CASH BAR

6:00 - 7:00 PM (DINNER)

7:00 - 9:00 PM (PROGRAM)

GUEST

SPEAKER: Mr. Eugene S. Grecheck , Vice President-Nuclear Support Services, Dominion Generation.

Mr. Grecheck's staff provides support to Dominion's seven nuclear units in Virginia, Connecticut and Wisconsin, including nuclear security, training, licensing and regulatory interface, emergency planning, industrial safety and operational support. A native of Schenectady, N.Y., Grecheck received a bachelor's degree in physics and a master's degree in nuclear engineering from Rensselaer Polytechnic Institute. He earned an MBA from Virginia Commonwealth University and an MBA Upgrade from Syracuse University. He also completed The Executive Program at the Darden Graduate School of the University of Virginia.

LOCATION: The historic **JEFFERSON HOTEL**, (101 West Franklin Street)

<http://www.jefferson-hotel.com>

COST: **MEMBER SOCIETIES:** \$60.00 per person

8 person tables can be reserved for \$425 per table

NON-SOCIETY MEMBERS: \$75.00 per person

STUDENTS: \$30 per person

RSVP: FEBRUARY 14, 2008

BANQUET IS OPEN TO ALL MEMBERS OF ENGINEERING SOCIETIES AND THEIR GUESTS.

REGISTRATION: **ON-LINE REGISTRATION (Credit Card Only) IS AVAILABLE!**

Go To: www.rjec.org Or

MAKE YOUR RESERVATIONS WITH PAYMENT USING THE FORM BELOW

----- Please return this form with your check to facilitate check-in at the Banquet -----

NAME(S) _____

SOCIETY _____

COMPANY _____

If VEGETARIAN MEAL desired, please check box



PLEASE MAKE CHECK PAYABLE TO 'RJEC' (MARKED 'BANQUET' IN LOWER LEFT) AND REMIT TO:

**RJEC
ENGINEERS' BANQUET
P. O. Box 8988
Richmond, Virginia 23225**

**QUESTIONS? Contact Mark Oakes at:
Tel. 804-323-2226 or E-mail moakes@vpmp.org**