

Richmond Joint Engineers' Council

NEWSLETTER August 2004

P.O. Box 8988, Richmond, Va 23225 Voice Mail: 804-278-2000 www.rjec.org

INSIDE:

- A GREAT START.....1
- MEMBERSHIP DRIVE.....1
- OPEN ACTIVITIES.....1
- SWE OFF AND RUNNING.....1
- NEXT RJEC MEETING.....1
- LAST MEETING MINUTES...2-4
- PROPOSED BUDGET.....5

WE'RE OFF TO A GREAT START!

The July regular meeting at our new location, Plant Zero Café, was a great success thanks to the organizing efforts of John Meola for making it happen. We had a great attendance and reviewed the budget and planning for the upcoming year. Plant Zero offers an open, industrial, and artistic setting which makes for a great meeting place for RJEC.

Welcome to some newer faces at our July meeting! Those contributing to the meeting and helping try out our new location included:

- Our newest Delegate member Sophie Gutner with the American Nuclear Society (ANS)
- Brad Reynolds as the new Delegate from Institute of Industrial Engineers (IIE)
- Rosemary Green as a representative (and Delegate) with the Society of Women Engineers (SWE).

Please send our Communications Director any updates to your organization's Board/Officers.

This is an important part of our goals this year to ensure that we maintain an accurate record of member society contact information, maintaining communication and

dialog with our Member Societies, and to help make ensure that Member Society dues are paid on time.

All of this ultimately leads to RJEC providing our Membership with the best possible service.

We hope to have another well-attended meeting this August 12, 2004 (Thursday) for some business, networking, (and great snacking!). Come check out a great part of downtown Richmond – Plant Zero.

-- John Stuart, Chair

MEMBERSHIP DRIVE

Soon we will be sending out invitations to both past and present member societies to join us for the year 2004-2005. That invitation will be addressed to organization Presidents/Chairs, Delegates and Treasurers. It will list the specific benefits of membership in RJEC. **We are committed to making our member societies feel that they serve their constituencies better by joining RJEC.** Every individual participating in RJEC is a member of another engineering, scientific or technical society. Our respective societies have some common goals and objectives. No one society has all the good ideas, and there are some things we can all do better by joining together.

SEND US YOUR OPEN ACTIVITIES

One of our goals for this year is to increase the level of interaction between our member organizations.

Increasing participation in our respective groups is one of the major benefits of RJEC. So to that end, send us a list of your upcoming activities that are open to other RJEC member organizations. We'll post them on our website. Then follow up by periodically checking our "Society Activities" page for things that might be of interest to you or your membership.

Email your list to: rw.kates57@comcast.net.

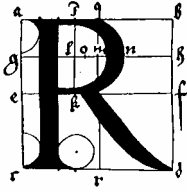
SWE OFF AND RUNNING

The Society of Women Engineers (SWE) is starting its 2004-2005 season with a social at the MeKong Restaurant on Wednesday, August 18 at 6 p.m. Please pass along this event to women in your organization. This is another opportunity to network with area engineers with similar interests. See the RJEC "Society Activities" web page for details.

NEXT RJEC MEETING:

**August 12, 6:00-7:00p.m.
Plant Zero, 4th & Hull.**

Meetings are intended for all member society delegates, RJEC officers and RJEC committee chairs. We also encourage individuals from both member and non-member societies to attend.



Richmond Joint Engineers' Council (RJEC)

P.O. Box 8988, Richmond, Virginia 23225

voice mail: 804-278-2000 www.rjec.org

RJEC Meeting Minutes – July 28, 2004 @ 6 p.m.

Location: Plant Zero, Café area (parking/entrance on 4th St. between Hull St. & Decateur St.)
Soft drinks and light appetizer provided for RJEC meeting.

Attendees:

Andy Shulick, IEEE	apshulick@ieee.org
Brad Reynolds, IIE	brad.c.reynolds@comcast.net
Rosemary Green, SWE	rosemary.gr@comcast.net
Sophie Gutner, ANS	s_gutner@yahoo.com
John Meola, ASSE	jmeola@vmsom.com
Dave Nelson, AIChE	dgnelson@vt.edu
Ray Nesbitt, AESF	mesbitt@cavtel.net
Dick Kates, IIE	rw.kates57@comcast.net
Herb Walke, IIE	wherb@erols.com
Dee Tomczak, SME	dbtomczak@aol.com
Tom Haas, ASME	twhaas@vcu.edu
Barbara King, RJEC	kingba@ieee.org
John Stuart, ASHE	jstuart@louisberger.com

RJEC 2004 – 2005 Chairman's Goals

1. Continue to improve and foster interaction and participation among RJEC Member Societies and continue development of membership database. ***Dues membership payments must be increased 100% from 2003-2004.***
2. Development of **16 page** Engineers' Week Supplement for displaying active Member Society information
3. Achieve Sponsor support goal of **30% increase** from 2003-2004.
4. Establish a new **Educational Committee** which develops and enhances the relationships between RJEC and the educational community.
5. Double the balance of the I. Russell **Berkness Endowed Scholarship** Fund towards meeting the RJEC commitment to Virginia State University.

Minutes:

- 1) John Meola, ASSE, presented the history and background of the Plant Zero building and provided a tour following the meeting. Plant Zero is a collection of local area artists'

studios and has a café open to the public which has won an award for the best new café in the area.

2) RJEC Calendar of Events for 2004 – 2005 was reviewed:

- **Wine & Cheese Social** was moved from November to end of September. Societies attending event will be posting their schedule of meetings and special events for the upcoming year.
- **FIRST Lego** (middle schools) & **Robotics** (high schools) **competitions** – Dee Tomczak will send info for Newsletter to provide details and call for volunteers and mentors from RJEC member societies.
- **Leadership Forum** – Barbara King will work with the Project Management Institute (PMI) to determine if joint event with RJEC and when scheduled.
- **National Engineers Week Banquet** – Date confirmed for Thursday February 24, 2005 (reference www.eweek.org). John Stuart will confirm facility arrangements with Rob Green; Dee Tomczak will confirm availability of speaker on Mars Explorer project.

3) Treasurer's Report:

- Year 2003-2004 Summary & proposed budget for 2004 – 2005 to be posted on web site for member society review and input by next meeting. Approve budget at next meeting.
- Corrections: (1) Berkness VSU Scholarship funds will be shown as separate items from Income & Expenses. (2) Leadership Forum on proposed budget has no income and no expense for RJEC budget if joint with PMI; show as dash line under income & expense.
- July 2004 Treasurer's Report – ending balance of \$2,139.

4) John Stuart reviewed the focus for the RJEC this year as follows:

- Increased RJEC sponsorships – Marketing brochure to be developed (Herb Walke, Chair Sponsorship Committee)
- Increased RJEC memberships & participation from societies (Dick Kates, Acting Chair Membership Committee)
- Increased focus on active member societies in the Richmond-Times Dispatch Supplement for Engineers Week (Bob Chandler, Chair Supplement Committee)
- Communications – maintaining active database of member societies contacts/officers, email & regular mailings of newsletter, and RJEC delegates providing input for newsletter

5) **Education Committee Chair:** Herb Walke has discussed this position with Lynn Wilson at John Tyler who is active in academic areas for area middle schools, high schools, and colleges. Herb Walke and Tom Haas to follow-up in defining RJEC's role (Career Day, FIRST competitions, Essay Contest, etc.) and member societies' participation.

6) **Reminder:**

- Committee Chairs to hold meetings and complete research/work outside Council meetings in order to be prepared to present proposals and status updates at Council meetings.
- **If anyone interested in joining a committee to provide any assistance possible, please contact committee Chairs or any RJEC officer (Committees to be posted on web site).**

7) **Next Meeting:**

August 12, 2004, 6 p.m. at Plant Zero – next to café area (4th & Hull Street, Richmond)

ACTION ITEMS:

- A. Next newsletter includes request for member society Board/Officer updates.
- B. Set date and make arrangements for September Wine and Cheese Social.
- C. Dues notice included in September newsletter.
- D. Committee Chairs provide reports at August 12 meeting. Including but not limited to:
 - a. Sponsor Committee
 - b. Membership Committee
 - c. Education Committee
- E. Facilities and agenda prepared for August 12 meeting

Respectfully submitted by John A. Stuart and Barbara King, 8/6/04.

RJEC 2003 - 2004 Budget Summary 7/1/03 - 6/30/04

SUMMARY EndYr '03-'04:

	Opening Balance:	4,215.89	2,315.70
	Balance '03-'04 (Rec'd - Spent):	(1,900.19)	1,240.00
	Closing Balance Available:	2,315.70	3,555.70

Prop. Bddget 2004 - 2005

Category	Budget	Actual	Difference	
			(Actual - Budget)	
Income				
Society Membership	2,000	1,000.00	(1,000.00)	2,000
Sponsorships	8,000	4,626.00	(3,374.00)	6,000
Scholarship Fund contributions- VSU	1,500	400.00	(1,100.00)	1,500
<i>Paid Reservations</i>				
Banquet Reservations	8,000	6,785.00	(1,215.00)	7,000
Forum Reservations	350	-	(350.00)	400
<i>Misc.</i>				
Bank Account Earned Interest	10	4.56	(5.44)	5
Total Income	19,860	12,815.56	(7,044.44)	16,905
Expenses				
<i>Education</i>				
Scholarship Fund - VSU	2,500	1,400.00	(1,100.00)	2,900
FIRST Robotics Competition	1,000	1,000.00	-	1,000
Essay Contest	800	700.00	(100.00)	800
<i>Admininistration</i>				
Advertising	450	-	(450.00)	500
Officer/Admin Expenses	400	183.77	(216.23)	400
Bank Charges	15	-	(15.00)	15
Name Tags	200	-	(200.00)	200
Newsletter	100	-	(100.00)	50
Web Site	1,000	169.87	(830.13)	400
Awards	500	168.25	(331.75)	300
<i>Paid Events</i>				
Leadership Forum	500	-	(500.00)	700
Banquet	10,000	9,624.29	(375.71)	6,000